

BONHILL ST

CHISWELL ST



TABERNACLE ST

WORSHIP ST



4,113 SQ FT
FULLY REFURBISHED
OFFICE SPACE TO LET











Newly refurbished, light and bright office in a fantastic North City/Shoreditch location.

The building is within a ten-minute walk of Moorgate, Old Street and Liverpool Street stations. The location bridges the gap between the city and tech belt, offering easy access to the traditional commercial districts and the vibrancy of Shoreditch/Old Street.

The first floor provides recently refurbished, partially fitted space which benefits from new LED lighting and kitchen/tea point. The space offers spacious floor plates with brilliant natural light.

The ground floor provides great natural light and also has the potential to be a self-contained space.

SPECIFICATION

-  Air conditioning
-  New LED lighting
-  New kitchenette
-  Self-contained potential
-  Refurbished reception
-  Cycle storage on estate
-  Passenger lift
-  Parking



LOCATION

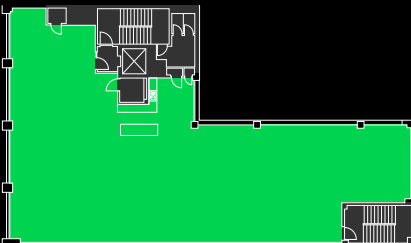
An abundance of local amenities including street markets, cafés, pubs and restaurants are right on the doorstep.

ACCOMMODATION

Floor	Sq Ft	Sq M
1st	3,253	302.2
Ground	860	79.9
Total	4,113	382.1

1ST FLOOR PLAN

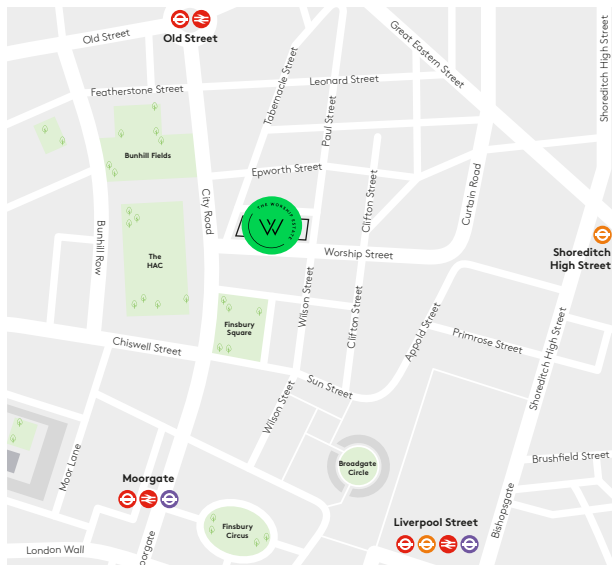
3,253 SQ FT (302.2 SQ M)



Worship Street



Plan not to scale, for indicative purposes only.



VIEWINGS

Strictly through sole letting agents.

Jamie Major
07799 341 569
jamie.major@avisonyoung.com

Amy Skidmore
07769 937 002
amy.skidmore@avisonyoung.com

Imogen Bellfield
07442 369 483
imogen.bellfield@avisonyoung.com

TERMS

Upon application.

**AVISON
YOUNG**