

BONHILL ST

CHISWELL ST



TABERNACLE ST

WORSHIP ST





1<sup>st</sup> Floor

1,769 – 5,292 SQ FT  
PARTIALLY FITTED  
OFFICE SPACE TO LET




**The 1<sup>st</sup> and 5<sup>th</sup> floors provide part fitted accommodation with fantastic natural light.**

The 1<sup>st</sup> floor offers great floor to ceiling height and a media style fit out.

The 5<sup>th</sup> floor represents one of the most economical office suites in the vicinity.

#### SPECIFICATION

-  Partially fitted accommodation
-  Raised floor
-  Good natural light
-  Creative style finishes
-  Exposed slab and pendant lighting
-  Passenger lift
-  24 hour access
-  EPC Rating - E



5th Floor

## LOCATION

An abundance of local amenities including street markets, cafés, pubs and restaurants are right on the doorstep.

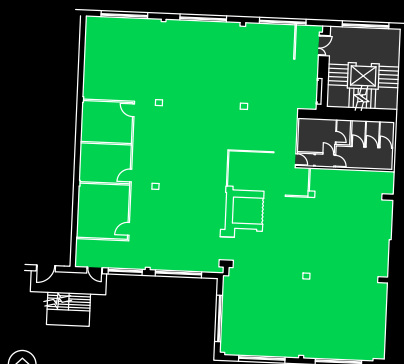
## ACCOMMODATION

Floor	Sq Ft	Sq M
5 <sup>th</sup>	1,769	164.3
1 <sup>st</sup>	3,523	327.3
<b>Total</b>	<b>5,292</b>	<b>491.6</b>

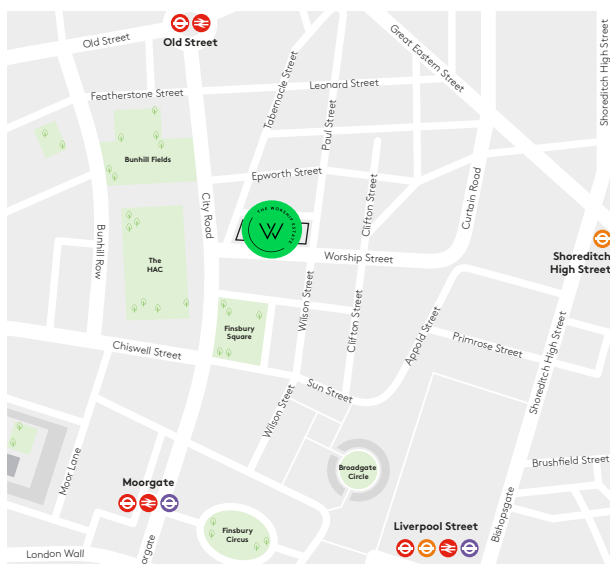
\* Available Q3 2020

## FIRST FLOOR

Bonhill Street



Plan not to scale, for indicative purposes only.



## VIEWINGS

Strictly through sole letting agents.

**Jamie Nurcombe**  
020 7344 6894s  
jamie.nurcombe@colliers.com

**Alfie John**  
020 7344 6690  
alfie.john@colliers.com

## TERMS

Upon application.

